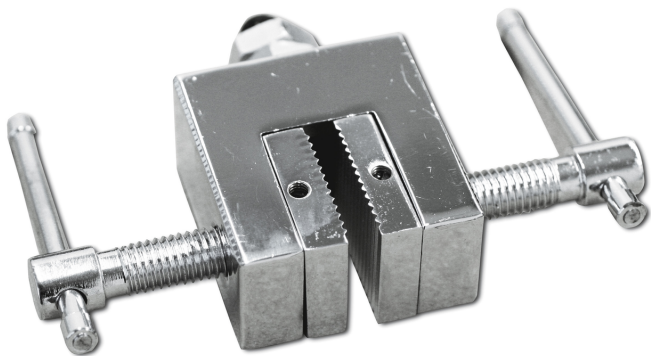


KERN AC 12

KERN

Universal 2-jaw grip for tension and rupture tests



Category

Brand	Sauter
Product category	Clamp
Product group	Screw tension clamp

Construction

Dimensions completely mounted (W×D×H)	110×80×25 mm
Material	steel
Material housing	metal
Mounting - force dissipation	External thread M10
Tensile/compressive force [Max]	5 kN
Maximum clamp width	25 mm
Clamping width	5 mm

Environmental conditions

Storage temperature [Min]	-10 °C
Storage temperature [Max]	40 °C

Packing & Shipping

Readability force [d] (N)	1 d
Dimensions packaging (W×D×H)	150×100×10 mm
Net weight	0,96 kg
Shipping method	Parcel service
Net weight approx.	1,00 kg
Gross weight approx.	1,00 kg
Shipping weight	0,98 kg

Pictograms

STANDARD

